

# OUTBACK

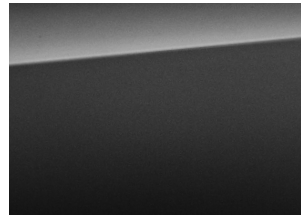
## EXTERIOR COLOUR



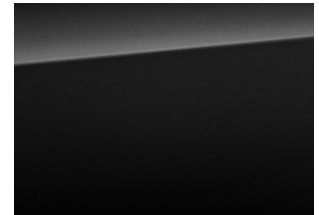
CRYSTAL WHITE PEARL



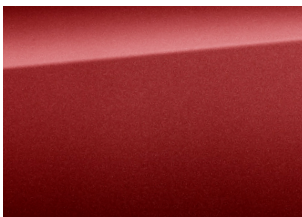
ICE SILVER METALLIC



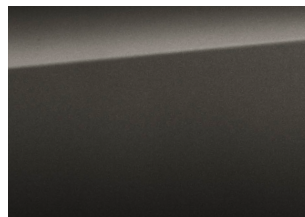
DARK GREY METALLIC\*



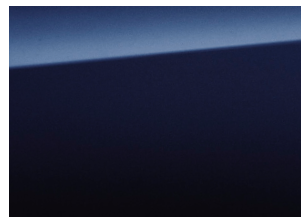
CRYSTAL BLACK SILICA\*



VENETIAN RED PEARL



PLATINUM GREY METALLIC



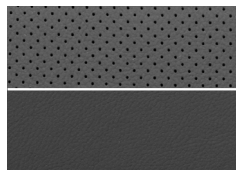
LAPIS BLUE PEARL\*



TUNGSTEN METALLIC\*

## SEAT MATERIAL

### LEATHER\*1

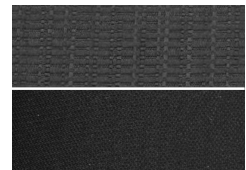


BLACK



IVORY\*2

### FABRIC



BLACK



**SUBARU**

*Confidence in Motion*

Owing to printing limitations, colour may differ from those shown in this chart. In addition, colours and seat variations may vary according to the individual market.

\*1 Standard on 2.0D-S and 2.5i-S, optional on 2.0D and 2.5i.

\*2 Available on 2.0D-S and 2.5i-S, for 4 Exterior Color\* only.

FUJI HEAVY INDUSTRIES LTD.

Printed in Belgium (15BOXXX-01CC)